



Farriers Close, Epsom

The **PERSONAL** Agent



# Offers In Excess Of £490,000 Freehold

- Terraced townhouse
- Three generous bedrooms
- Beautifully refurbished kitchen/dining room
- French doors opening onto lovely private garden
- Bright first-floor lounge
- Family bathroom & separate WC
- Covered parking plus additional off-road parking space
- Short walk to town & station
- Close to excellent schools
- Further visitors parking nearby

Enjoying a highly convenient and quiet, tucked-away location, this well-maintained contemporary family home warrants immediate viewing to fully appreciate its bright and spacious rooms. Features include a private rear garden, double glazing, gas central heating with a recently installed combi boiler, and a carport along with additional allocated off-road parking.

The ground floor accommodation flows effortlessly with a welcoming entrance hall and downstairs WC, a spacious kitchen/dining room with French doors leading to the beautifully-maintained rear garden.

On the first floor is a good-sized and bright living room and a generous double bedroom with bay window overlooking the garden. The second floor contains another two well-proportioned bedrooms

(one currently used as an office) that are served by a modern family bathroom complete with bath and shower units.

Outside to the front, there is a useful carport and an adjacent off-road parking space.

Farriers Close is conveniently located within a short walk of local amenities and is just 0.65 miles away from Epsom town centre and railway station, while Ewell West (Zone 6) station is just 0.75 miles away. Both stations offer direct trains to London Bridge, Victoria and Waterloo. The property is also situated close to several schools including the Ofsted-rated Outstanding Wallace Fields.

The Farriers development is a popular spot and within the close surrounding area are several beautiful parks

with playgrounds, the Rainbow Leisure Centre and Gym, Sainsbury's, and excellent road links to the A24, A3 and A217 as well as regular bus links.

Nearby Epsom High Street has a variety of shops, the Ashley Centre - a covered shopping mall - and Epsom Playhouse. The Rainbow Leisure Centre & David Lloyd Centre feature pool, gym, and other sports facilities. Epsom is a popular commuter town, located to the south west of London and offers a good mix of state and independent schools for all age groups. Also close by is Epsom Downs, the home of The Derby.

Overall, it would be hard to find a better positioned property for commuting, schooling and daily life.

Tenure - Freehold  
Council Tax Band - E











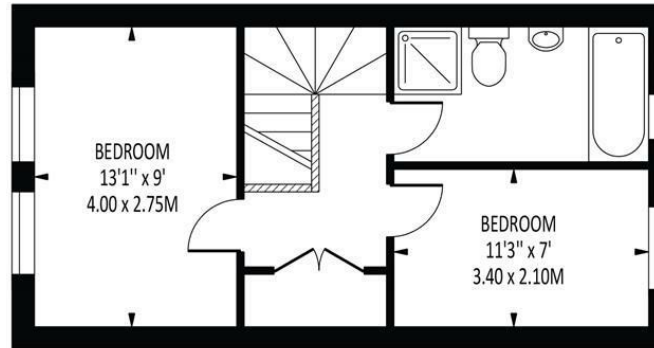


The **PERSONAL** Agent

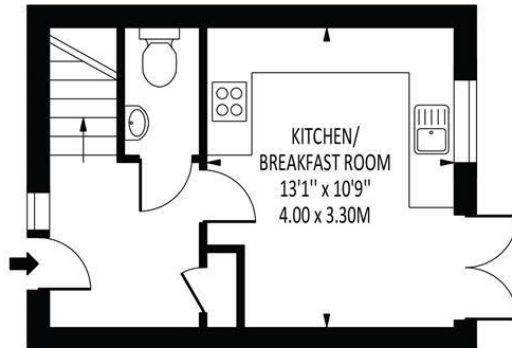


## Farriers Close

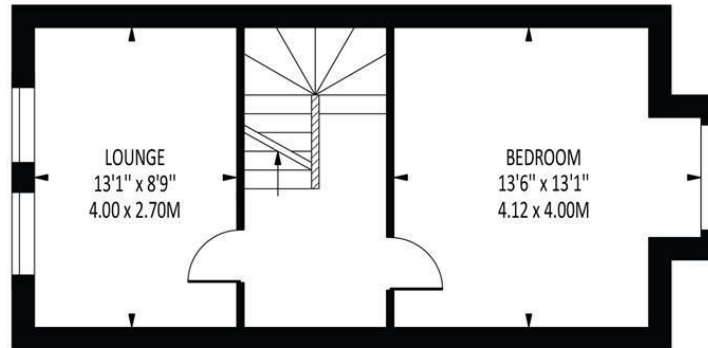
Total Area: 948 SQ FT • 88.04 SQ M



SECOND FLOOR



GROUND FLOOR



FIRST FLOOR

Disclaimer: For Illustration Purposes only

This floor plan should be used as a general outline for guidance only and does not constitute in whole or in part an offer of contract. Any intending purchaser or lessee should satisfy themselves by inspection, searches, enquiries and full survey as to the correctness of each statement. Any areas, measurements or distances quoted are approximate and should not be used to value a property or be the basis of any sale or let.

Energy Efficiency Rating		
	Current	Potential
Very energy efficient - lower running costs		
(92 plus) <b>A</b>		
(81-91) <b>B</b>		
(69-80) <b>C</b>		
(55-68) <b>D</b>		
(39-54) <b>E</b>		
(21-38) <b>F</b>		
(1-20) <b>G</b>		
Not energy efficient - higher running costs		
England & Wales		EU Directive 2002/91/EC
	74	86

**EPSOM OFFICE**  
2 West Street  
Epsom, Surrey, KT18 7RG  
01372 745 850

**STONELEIGH/EWELL OFFICE**  
62 Stoneleigh Broadway  
Stoneleigh, Surrey, KT17 2HS  
020 8393 9411

**BANSTEAD OFFICE**  
141 High Street  
Banstead, Surrey, SM7 2NS  
01737 333 699

**TADWORTH OFFICE**  
Station Approach Road  
Tadworth, Surrey, KT20 5AG  
01737 814 900

**LETTINGS & MANAGEMENT**  
157 High Street  
Epsom, Surrey KT19 8EW  
01372 726 666

The  
**PERSONAL**  
Agent

The Personal Agent Ltd. Registered office: 2A Boston Rd, Henley-on-Thames RG9 1DY.  
Registered in England No. 4398817.



**Please Note:** Whilst every attempt has been made to ensure the accuracy of the floorplans contained here, measurements of doors, windows and room areas are approximate and no responsibility is taken for any error, omission or mis-statement. These plans are for representation purposes only and should be used as such by and prospective purchaser. The services, systems and appliances listed in the specification have not been tested by The Personal Agent and no guarantee as to their operating ability or their efficiency can be given. All images and text used to advertise our properties are for the sole use of The Personal Agent Ltd.



